

POWERFAB

LIMITED

125WTD/125WT



① 160/65 R 3.5 Hydraulic  
② 11" 4 1/2" capacity  
22" x 7" max

*The Better British Excavator...*

# 125WTD/125WT

The Better British Excavator...



## ENGINE

Four stroke overhead valve petrol engine for exceptionally smooth and quiet operation. Optional, compact air cooled industrial diesel featuring: two stage direct injection for low noise and smooth running, electric start.

	Standard Petrol	Option Diesel
Model:	Honda GX340 11HP	Honda GD410
Capacity:	377cc	41cc
Bore/Stroke:	82 x 64mm	82 x 78mm
Net continuous power:	11HP @ 3000RPM	9HP @ 3000RPM
Net continuous torque:	24kg cm @ 2500RPM	21kg cm @ 2500RPM
Battery:	Option: Electric Start, 12 volt 45Ah Recoil Start Std.	12 volt 45Ah Electric Start Std.

## WHEEL DRIVE (125WTD only)

Independent hydrostatic drive to front wheels by high torque motors transferring power directly to bolt on steel rims mounting low ground pressure high traction tyres. Drive motors disengaged by changeover levers to permit towing on highway at up to 50MPH. Self seal quick release hydraulic couplings and axle pins permit simple and rapid removal of wheels to pass through very narrow openings (27"). Independent wheel drive and hydraulic outriggers permit accurate positioning of machine on unprepared unlevelled sites.

Travel speed - 4.8Kmph

## HYDRAULICS

A single pump supplies power to a composite valve featuring precise proportional flow for smooth and progressive control, in line flow control automatically restricts velocities to minimise shock and spillage. Hydraulic circuits divided to optimise power and smooth operation. Demand operated preferential flow divider maximises digging power. High efficiency hydraulic oil cooler with turbo fan for heavy duty, safe operation of tools and accessories, and use in high ambient temperature. Filtered flow and return with replaceable cartridge on main flow.

Hydraulic pump output: 28.8 LPM

Main relief valve setting: 165 Bar.

HPDT relief valve setting: 138 BAR

Hydraulic motors: Travel, two high torque axial piston with counter balance valve. Cylinders 4"Ø. Boom and dipper and Bucket and Swing 2.375" diameter 12" stroke. Front legs: 2.375" diameter x 6" stroke. Rear anchor: 2.375" diameter x 6" stroke.

(Note 125WT not available with HPDT and oil cooler).

## SWING

Precise proportional flow operating controls with shock absorbing valves ensure smooth stop and start minimising operator fatigue. Continuous boom swing of 145°.

## CONSTRUCTION

Very high specification all steel construction for long life in continuous heavy duty situations. Hardened lubricated pivot pins on boom, dipper and bucket pivots. Replaceable bolt-on hardened bucket teeth. Fully protected rams. Mounted on fabricated heavy duty chassis fitted with drawbar and standard 50mm coupling for highway towing. Balanced for ease of handling off vehicle.



POWERFAB

LIMITED



QUICK RELEASE FRONT AND REAR  
AXLES FOR DIFFICULT SITES



TWO LEVERS CONTROL  
ALL DIGGING FUNCTIONS

# POWERFAB

LIMITED

## GENERAL SPECIFICATION

Dimensions: mm (inch)

### Mass:

Operating: 125WTD 0.74 tonnes max.  
125WT 0.69 tonnes max.

### Capacity:

Powerfab 16" (standard) bucket:  
0.045cu SAE 0.04cu GECE)

Tear out force 1.7 tonnes at root of bucket teeth.

### HPTO:

Body mounted hydraulic power take off with self seal quick release couplings console mounted in / off control.

### Digging dimensions - Max:

Ht: 2.27m

Dump ht: 2.00m

Depth: 2.28m (2.6m optional)

Vertical dig: 1.24m

Radius: 2.76m

### Noise:

LWA 103, LPA 90

### Buckets:

4" & 8" xley,  
9" 12" 16" 24" 27" digging,  
36" ditching and 36" blade,  
4" tipping tool.

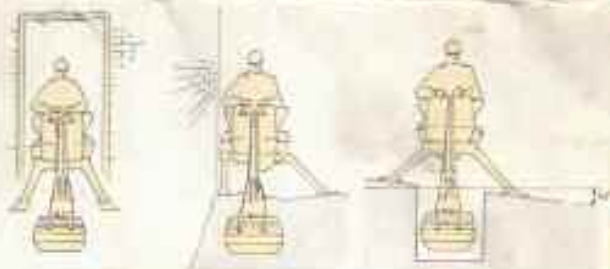
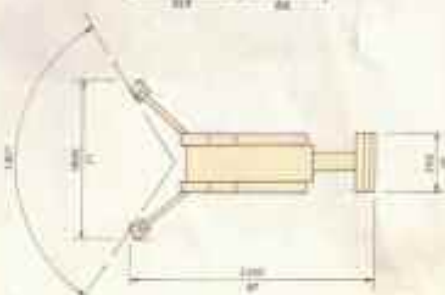
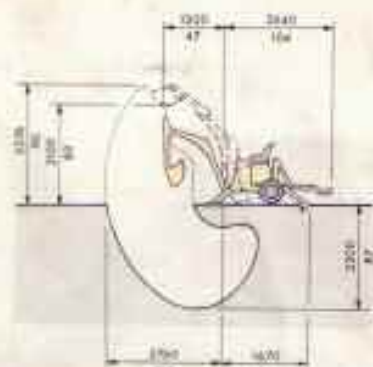
### Tyres:

Front 125WTD 25 x 10.5 x 12  
Rear 500 x 10 x 6 on pressed steel bolt on rims.

Front 125WT 500 x 10 x 6  
Rear 500 x 10 x 6

Due to our policy of constant improvement, we reserve the right to amend the design or specification without prior notice. Patent Pending © POWERFAB LIMITED

DEALER



# POWERFAB

LIMITED

POWERFAB LIMITED, FAIRVIEW, ASHVALE, TREDGAR, GWENT NP23HA,  
Tel: 0495 72880 (7 lines), Fax: 0495 718162

# 125WTD/125WT

The Better British Excavator...



# POWERFAB

LIMITED



1700X



1000X



HY-TIP



1250X



180X



300L

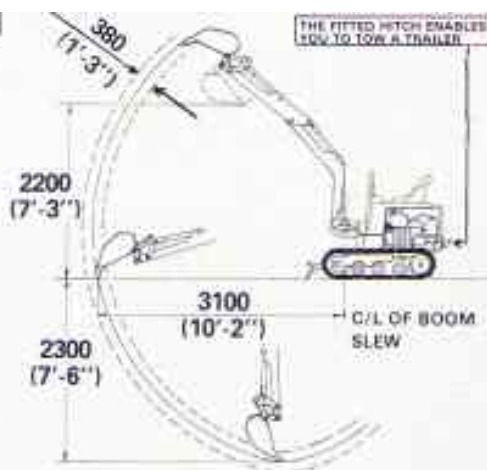
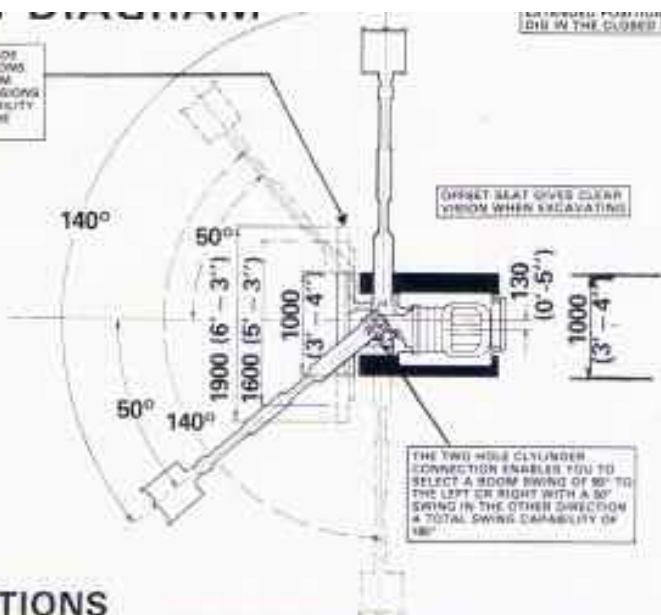


125WTD/125WT

Apr 83  
5310

*The Better British Excavator...*

1.3M WIDE BULLDOZER BLADE WITH TELESCOPIC EXTENSIONS TO GIVE OVERALL MAXIMUM WIDTH OF 1.9M. THE EXTENSIONS PRODUCE INCREASED STABILITY WHEN OPERATING OVER THE SIDE.



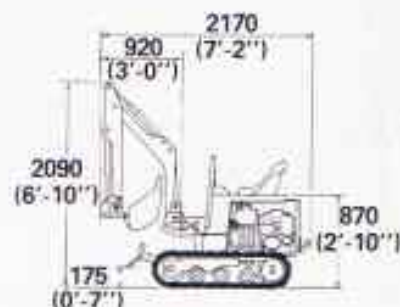
## OPERATING DIAGRAM

## SPECIFICATIONS

ITEM	DESCRIPTION	TECHNICAL DATA
ENGINE	Honda (Standard)	11 H.P. Air Cooled Petrol
	Yanmar (Optional)	9 H.P. Air Cooled Diesel
	Honda (Optional)	9 H.P. Air Cooled Diesel
PERFORMANCE	Gradeability	58% (30°)
	Boom Swing Angle	180°
	Travelling Speed	1.76 Km/Hr (1.1 mph)
	Ground Contact Pressure	0.23 Kg cm <sup>2</sup>
BUCKET	Standard Bucket	Capacity 400 mm
	Deep Bucket	Capacity 400 mm
HYDRAULIC H.P.T.O.	Pump Flow	21 L.P.M.
	H.P.T.O. Operating Pressure	138 bar
	Main Line Relief Pressure	165 bar
UNDERCARRIAGE	Track Width	Reinforced Rubber 200 mm
	Number of Rollers	3 per Track
DOZER BLADE	Standard Width & Height	1000 x 230
	With Telescopic Extn	
	Max Width	1900
	Min Width	1600
	Lift and Drop	Lift 175 Drop 385
SHIPPING DIMENSIONS	Length x Width x Height	2.2m x 1m x 2.1m <sup>3</sup>
MASS	Operating Weight	0.88 Tonne

For further information contact our Sales Dept. at the address given below.

Your Powerfab Distributor.



## MAJOR DIMENSIONS

### BUCKETS

A RANGE OF EXCAVATOR BUCKETS ARE AVAILABLE IN WIDTHS RANGING FROM 200mm TO 600mm.

SPECIAL PURPOSE ATTACHMENTS INCLUDING GRABS, FACE SHOVELS, GRAVE DIG BUCKETS AND MATERIAL HANDLING BUCKETS ARE ALSO AVAILABLE.

### ANCILLARY EQUIPMENT

THE OPTIONAL H.P.T.O. CONNECTIONS ENABLE YOU TO POWER A RANGE OF HYDRAULICALLY OPERATED IMPLEMENTS INCLUDING HAND AND MACHINE HELD BREAKERS, CIRCULAR AND CHAIN SAWS, DRILLS, POLE HOLE BORERS, BRUSHES, WATER PUMPS, PRUNERS ETC.

Due to our policy of continual improvement, we reserve the right to amend design or specifications without prior notice.

# POWERFAB

SALES & SPARES LIMITED

FAIR VIEW, ASHVALE,  
TREDEGAR, GWENT NP2 3HA  
UNITED KINGDOM.  
TELEPHONE: 049525 - 6627.  
TELEX: 498973 POWFAB G.  
FAX: 0495 - 718162



# POWERFAB 180C CRAWLER EXCAVATOR

2.3M DEPTH OF DIG

1.2 TON DIGGING FORCE



STANDARD MACHINE 40" WIDE

30" WIDE MACHINES AVAILABLE



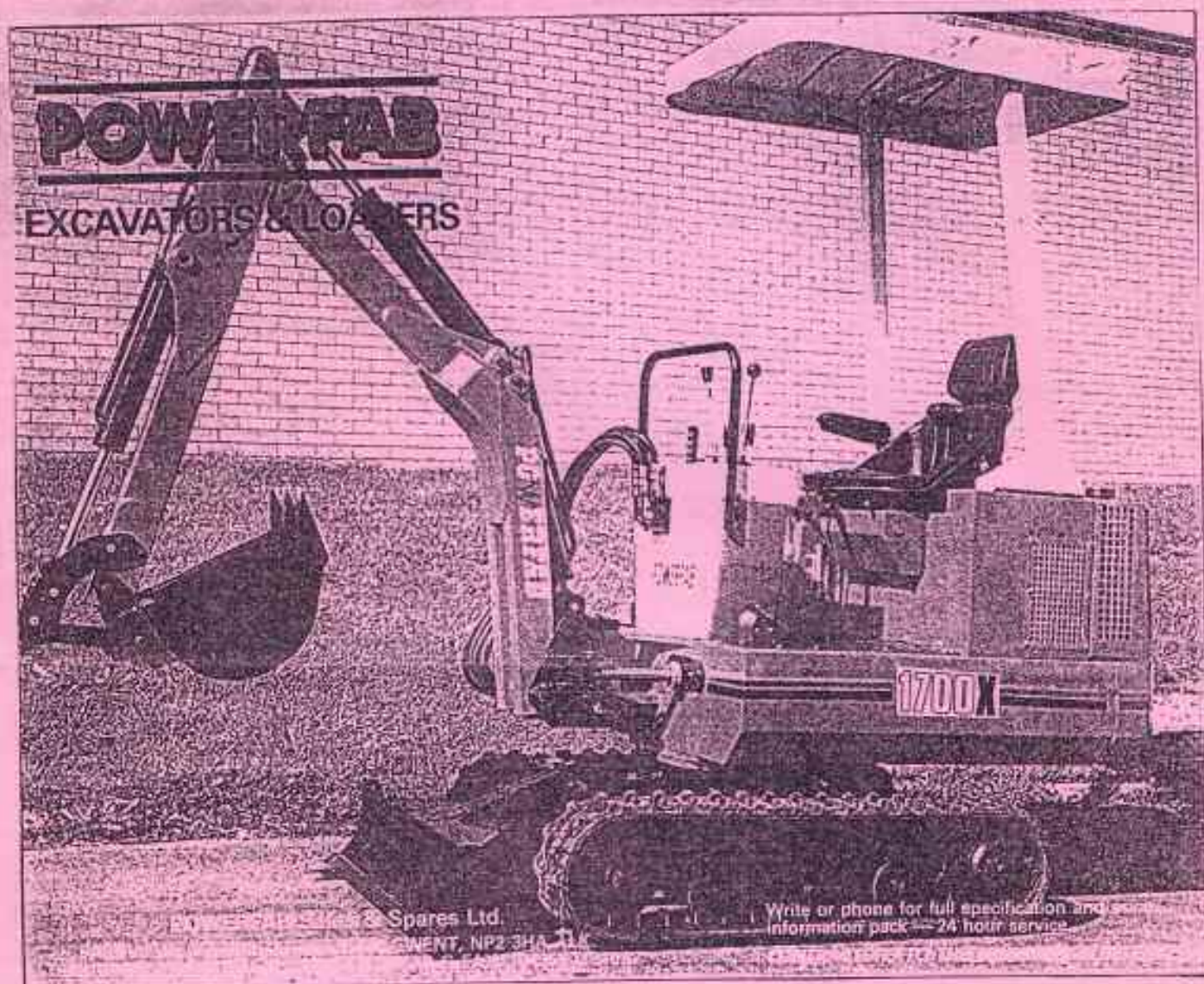
180° BOOM SLEW

- LIGHT WEIGHT 0.88 TONNE
- CAN TOW A TRAILER OVER ROUGH AND INCLINED GROUND
- TELESCOPIC DOZER BLADE FOR INCREASED SIDE STABILITY
- ALL ROUND EASY ACCESS FOR SERVICING AND MAINTENANCE
- WORKS IN CONFINED SPACE
- AIR COOLED PETROL ENGINE. DIESEL ENGINES OPTIONAL
- HPTO WILL POWER HYDRAULIC IMPLEMENTS INCLUDING BREAKERS, SAWS, PUMPS, ETC
- REINFORCED RUBBER TRACKS



# POWERFAB

# 1700X



## PERKINS DIESEL ENGINE SERIES 103-10 WITH HPTC

1700X  
\*\*\*\*\*

STANDARD DIGGER ALL STEEL CONSTRUCTION POWERED BY PERKINS DIESEL ENGINE. MODEL 103-10, 21.2 HP AT 3600 RPM. 3 CYLINDER, WATER COOLED, ELECTRIC START. ENGINE WORKING SPEED 2700 RPM. 3 PUMP SYSTEM.

OFF SET DIGGING POSITION.  
HYDRAULIC POWER TAKE OFF  
QUICK RELEASE COUPLINGS MOUNTED ON EACH  
DEPTH OF DIG 2.3M (7'6").  
1.7 TONNE TEAR OUT FORCE.  
COMPLETE WITH 16" BUCKET.

£12980.00  
\*\*\*\*\*

PRINTED: 23 APRIL 1990



OPTIONAL EXTRAS

ITEM	DESCRIPTION	PRICE
TELESCOPIC BUCKET ARM.	15" STROKE HYDRAULIC FOOT OPERATED. INCREASES DIGGING DEPTH 0.19M (7.5") (REPLACING EXISTING DIPPER ARM)	£765
TELESCOPIC BUCKET ARM.	MANUALLY ADJUSTED. INCREASES DIGGING DEPTH 0.19M (7.5").	£450
POWERFAB BREAKER.	MACHINE HELD BREAKER INCLUDING SIDE PLATES, HOSES AND 1 STEEL	£3080
STANLEY BREAKER.	BAND HELD BREAKER BR45 INCLUDING HOSES AND 1 STEEL	£1210
CONCRETE SAW.	PRICE ON APPLICATION.	
GRAB.	GRAB MECHANISM 2 1/2 DIA. 6" STROKE. MAX WORKING PRESSURE 186 PAF (2700 psi). COMPLETE WITH CLAM SHELL BUCKET.	£595
HYDRAULIC EARTH DRILL HEAD (HEAVY DUTY)	USED WITH SINGLE HPTO.	£780
ADGERS TO SUIT	6" DIAMETER.	£308
	8" DIAMETER.	£340
	10" DIAMETER.	£375
	12" DIAMETER.	£405
8" BUCKET.	8" (20 CM) WIDE DIGGING BUCKET. 2 TEETH. CAPACITY 0.024M.	£140
8" BUCKET.	8" (20 CM) WIDE CLAY DIGGING BUCKET.	£148
12" BUCKET.	12" (30 CM) WIDE DIGGING BUCKET. 3 TEETH. CAPACITY 0.035M	£165
16" BUCKET.	16" (41 CM) WIDE SQUARE DIGGING BUCKET. 3 TEETH	£150
20" BUCKET.	20" (50 CM) WIDE SQUARE DIG BUCKET. 4 TEETH. CAPACITY 0.55M.	£215
24" BUCKET.	24" (61 CM) WIDE DIGGING BUCKET. 4 TEETH. CAPACITY 0.07M	£230
36" BUCKET	36" (91 CM) WIDE MATERIAL HANDLING BUCKET.	£230
HALF CAB	CAB WITH GLASS FRONT AND REAR (FRONT WIPER), CANVAS SIDES	£1640
FULL CAB	ALL-STEEL CONSTRUCTION. GLASS FRONT, REAR AND SIDES. BEATER & FRONT WIPER.	£1970
	RIPPING TOOTH	£132
	EXPORT CRATE PRICE	£120

BROCHURE NO: P0251

POWERFAB SALES & SPARES LTD

FAIRVIEW  
ASHVALE  
TREDGAM  
GWERT. Tel: 0495 25 6627/8



THE AMAZINGLY VERSATILE AND INNOVATIVE LOADER

# POWERFAB 300

SELF TRAILERING

## SKID STEER LOADER

HYDROSTATIC TRANSMISSION/ENGINE POWERED

TOWING MOBILITY  
SKID STEER ABILITY



### ADVANTAGES:

- \* Immersion in Sealed Oil Bath ensures that Drive Chain remains free from dirt, stones and outside elements.
- \* 23" dia. wheels gives Low Rolling Resistance, thus ensuring longer tyre life.



- LOW PURCHASE COST
- LOW MAINTENANCE
- BUILDS RENTAL PROFITS
- EASY "ONE - MAN" OPERATION
- QUICK RETURN ON INVESTMENT
- BUILDS REPEAT BUSINESS
- EASILY TOWED, CAR/LIGHT TRUCK

**DESIGNED FOR  
PERFORMANCE  
AND  
MANOEUVRABILITY**

- LOADS IN AREAS INACCESSIBLE TO BIGGER MACHINES •

SOLVES CONFINED LOADING, BACK FILLING AND BREAKER PROBLEMS OF NARROW WIDTHS, CONFINED AREAS, TIGHT ACCESS AND LOW OVERHEAD CLEARANCES